

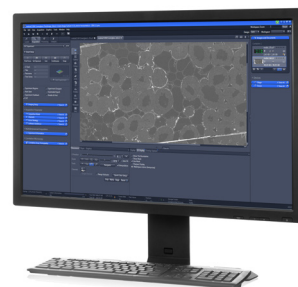
# Save time and work more efficiently

## ZEISS upgrade for LSM 7 family system with a new PC and software

The processing power and storage capacity of imaging workstations are ever-increasing.

A new computer with the latest ZEN imaging software will give you the power to handle large files and can speed up processing significantly.

Give your eyes a treat with an additional widescreen monitor.



### Highlights

- Several configurations available to match your needs and budget
- Specified, built and tested to match the needs of even the most demanding imaging tasks
- Add extra hard drives and RAM up to the maximum technical specifications
- Large widescreen monitors are available that ideally suit to hold the acquisition and processing tools plus your high-resolution images

### Upgrade your ZEISS microscope

Allow your system to do more and upgrade to a new, more powerful computer with ample storage, RAM and CPU power.

Get the latest version of ZEN imaging software to benefit from its newest features and the most advanced flexible and intuitive graphical interface.

Add a new widescreen monitor for extra screen space to hold all your images and tools.

Contact us to learn more about computer upgrades:

[microscopy@zeiss.com](mailto:microscopy@zeiss.com)



Seeing beyond

# ZEISS upgrade for LSM 7 family system with a new PC and software

Save time and work more efficiently

## Available models for LSM 710 and LSM 780

Premium	
Processor	2× Intel® Xeon® E5-2623v3 4-Core 3.0 GHz
Memory	64 GB (max. 256 GB with Windows 10, max. 192 GB with Windows 7) 4 TB
Storage	Raid 10 (4× 2 TB HDD)
Graphics	NVIDIA Quadro K2200 4 GB
Operating system	Windows 10 Enterprise x64 LTSB (Long-Term Servicing Branch) or Windows 7 Ultimate x64
Mid range	
Processor	1× Intel® Xeon® E5-2623v3 4-Core 3.0 GHz
Memory	16 GB (max. 128 GB)
Storage	2 TB Raid 1 (2× 2 TB HDD) and 256 GB SSD
Graphics	NVIDIA Quadro K620 2 GB
Operating system	Windows 10 Enterprise x64 LTSB (Long-Term Servicing Branch) or Windows 7 Ultimate x64

## Available models for LSM 700

Standard	
Processor	1× Intel® Core™ i5-6500 4-Core 3.2 GHz
Memory	16 GB (max. 64 GB)
Storage	256 GB SSD and 4 TB HDD
Graphics	NVIDIA Quadro K620 2 GB
Operating system	Windows 10 Enterprise x64 LTSB (Long-Term Servicing Branch)
Monitors	
Matching TFT monitors are available in 24" (61 cm) or 27" (68 cm) size.	



microscopy@zeiss.com  
www.zeiss.com/microscopy